



## Topic 2 workshop

- thematic partner TOPIC T2 **Natural risks management,**  
**especially wildfires -**

Name of the Project: PROTECT



Name of the Partner: Province of Macerata / UNICAM

Name of the speaker: Stefano Chelli



## TOPIC 2 workshop

✓ What's our capitalisation methodology?

What do you want to put forward and to keep in Medland deliverables?

The software to forecast forest fire risk, including a standard procedure to adapt the Fire Weather Index (FWI) to each local condition

COMMON MODEL



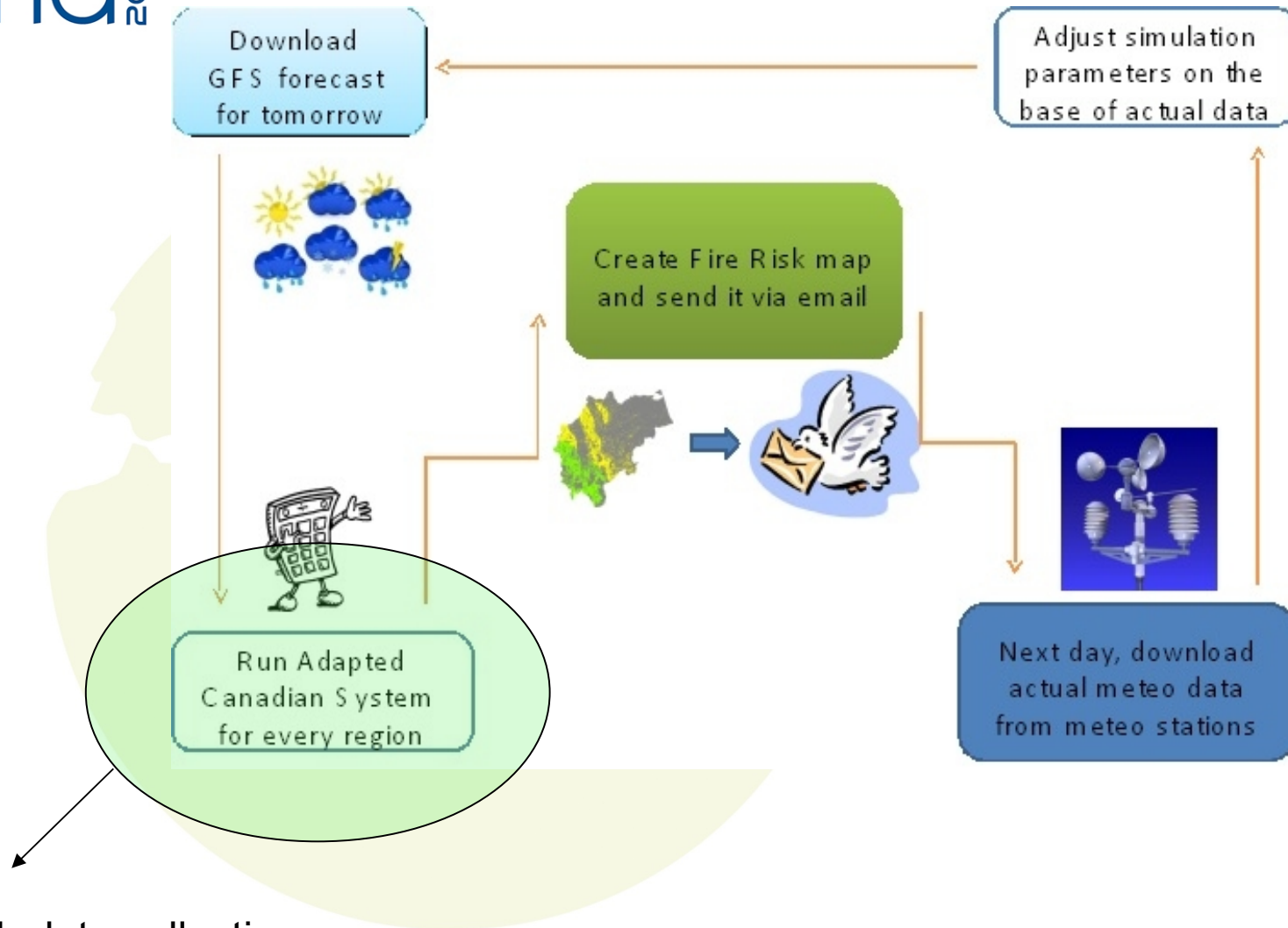
FORECASTING

PREVENTION



ACTIVE FIGHT

RECOVERY



Adaptation through data collection (standard protocol available) and specific mathematic procedure

## TOPIC 2 workshop

✓ What's our capitalisation methodology?

What are the transferability conditions? (biogeographical context, socio-economic context)

The software is suitable for all biogeographical contexts (not only for the Mediterranean area).

The adaptation procedure is based on field data collection according to a standard manual usable in several types of forests

The only one condition for the software running is the availability of daily online meteo data

## TOPIC 2 workshop

- ✓ Be **critical** about your project (approach, methods, tools, implementation) :
  - ✓ What was good/what has worked? Why?
  - The software is automatic and works daily also after the end of the project
  - Ordinary functioning without time-consuming management activities
  - Easy and quick procedure for the field sampling, also for not expert personnel . No need of expensive equipments.
  - Effectiveness of the outputs: daily map sent by e-mail to local personnel in charge for fire prevention and Civil protection

## TOPIC 2 workshop

- Be **critical** about your project (approach, methods, tools, implementation)

What was bad/what hasn't worked? Why? How do improve it?

For some territories of the PROTECT partnership, there weren't the availability of daily online meteo data, therefore no forecast maps has been produced. In cases like this, it would be very important an integration with subjects responsible of meteo data collection and management.

Difficulties to disseminate the procedure to other territories and in particular to the institution in charge for the fire forecast in Europe (JRC – Effis) – No dialogue, no interactions, no feedback.





## TOPIC 2 workshop

- Be **critical** about your project (approach, methods, tools, implementation)

Recommendations?

- **Involvement of key actors and stakeholders during the first phases of projects.**

e.g. for project related to forest fire forecast and prevention is necessary the involvement of National and Regional authorities with the related insitutional competences.

JRC – Effis is fundamental to improve the forecast system, to test it and to adopt to entire Mediterranean countries

- **EU and International policies.** Take always into account two documents: EU strategy for forest and FAO position paper on wildfire prevention in the Mediterranean

## Challenges and opportunities on each cross-sectoral component

Cross-sectoral components: **C1. Governance and participation involvement**

### Challenges

**Key authorities.** For the implementation and the use of the “tool” is fundamental the participation of subjects involved in Civil Protection

**Integrate** local prevention plans with detailed forecast systems (like the one create during the Protect project)

**Land planning** and management should take into account forest fire risk

### Opportunities

**Integrated partnership.** Civil protection agencies, research institutes, regional authorities



## Challenges and opportunities on each cross-sectoral component

Cross-sectoral components: C2. Operational and R+D priorities;

### Challenges

**Climate change** and **land use** will require more attention to environmental hazards.

The FWI adaptation to several climate/vegetation conditions is **quick** and at the same time **necessary**.

**New tests** are needed (different types of vegetations) and **more tools** can be developed inside the software.

### Opportunities

**Integration** with land planning-, carbon stock-, and fuel- dynamic models.

**Collaboration** with the Effis system (JRC) to improve the EU forest fire forecast system.

**Development** of the software with new tools, i.e. fire propagation (also for smartphone) for a use in the field.

## Challenges and opportunities on each cross-sectoral component

Cross-sectoral components: **C4. Financial needs and opportunities**

### Challenges

**Less money** available for fire fighting operations, but **new tools** for fire forecast and prevention

### Opportunities

The data collection following the standardised protocol is easy, also for not expert personnel. Financial needs for data elaboration, to improve the software and to ameliorate/standardize the outputs

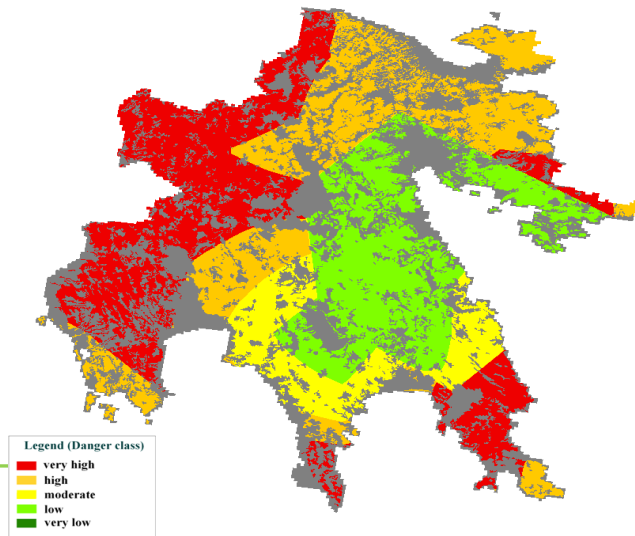
Forests, environmental hazards and climate change are strongly present in **EU programmes** and objectives to 2020.

## List of operational tools and best practices [Linked with the e.Book contents](#)

*Cross-sectoral components: C1. Governance and participation involvement; C2. Operational and R+D priorities; C3. Target group focused communication needs; C4. Financial needs and opportunities*

- Common model to protect forest from fires – C.1 – C.2 – C.3 – C.4
- Risk assessment software (together with a standardized procedure to collect field data and adapt the FWI to local conditions) – C.1 – C.2 – C.4

Peloponneso\_12-9-2012



## Description of operational tools and best practices [Linked with the e.Book contents](#)

DESCRIPTION OF DELIVERABLE: Common model to protect mediterranean forest from fire

CORE OF DELIVERABLE: Knowledge

TYPE OF CONTENTS: Management plan, Political recommendation

FORMAT: Book, paper document online

MAIN TARGET GROUPS: Decision makers, Public administration

LANGUAGE: En, It, Fr, Es, Gr,....

DESCRIPTION OF DELIVERABLE: Forest fire risk assessment software

CORE OF DELIVERABLE: Support tool

TYPE OF CONTENTS: Technical methodology and tool

FORMAT: Software and annex paper (methodology and instructions)

MAIN TARGET GROUPS: Public sector; Research institutes

LANGUAGE: En